

Risk assessment for the omission of a surge protective device (SPD)



RECORD OF CLIENT'S INSTRUCTION

BS 7671:2018+A2:2022 in **Regulation 443.4.1** mandates the use of surge protective devices (SPDs) in order to protect against transient overvoltages where the consequence caused by the overvoltage could result in:

- Serious injury to, or loss of, human life
- Failure of a safety service, as defined in Part 2
- Significant financial or data loss.

For all other cases, protection against transient overvoltages shall be provided unless the owner of the installation declares it is not required due to any loss or damage being tolerable and they accept the risk of damage to equipment and any consequential loss.

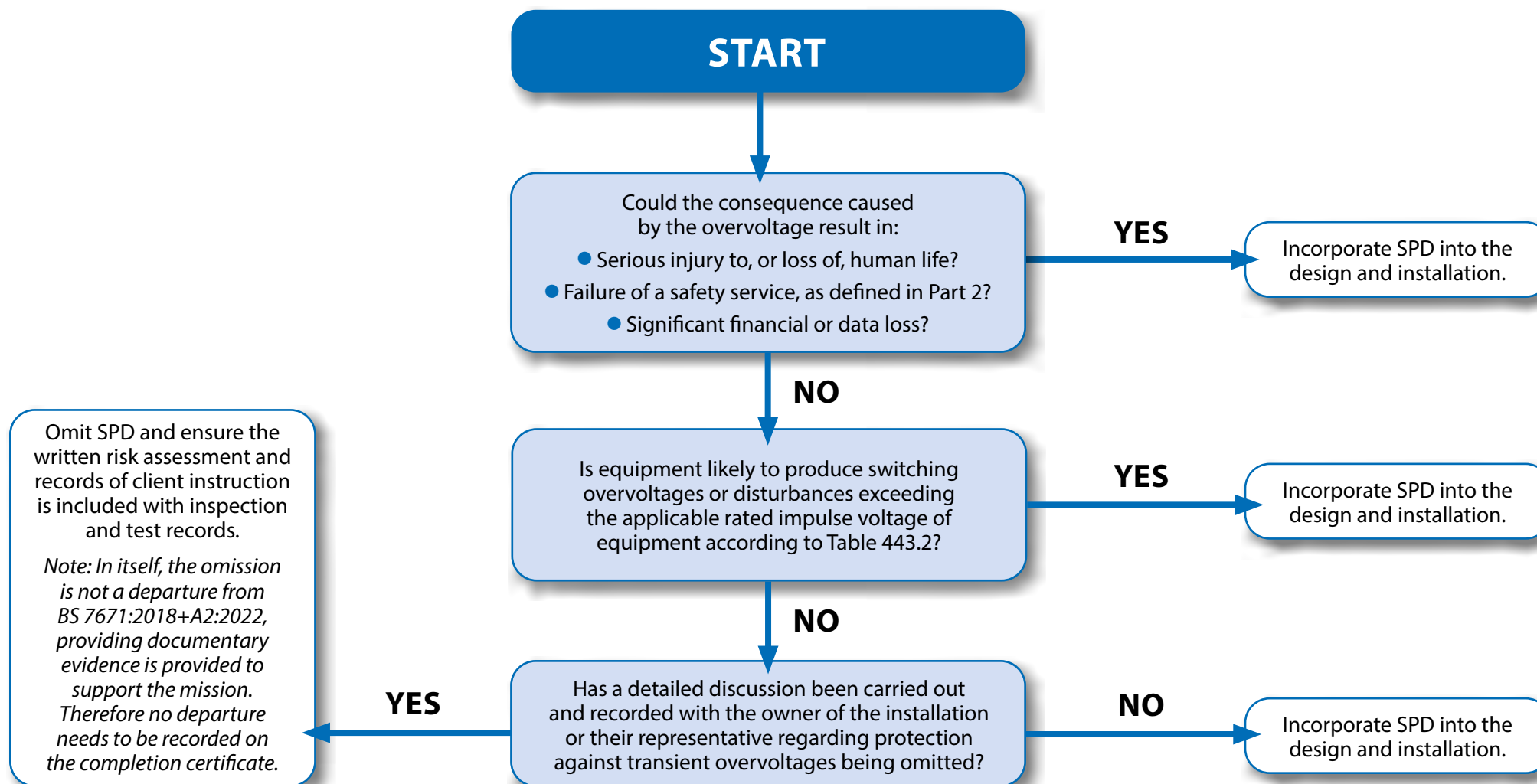
Part 2 defines a **safety service** as an electrical system for electrical equipment provided to protect or warn persons in the event of a hazard, or essential to their evacuation from a location.

Furthermore, **Regulation 443.4.2** mandates that protection against overvoltages shall be considered in the case of equipment likely to produce switching overvoltages or disturbances exceeding the applicable rated impulse voltage of equipment according to **Table 443.2**, for example where inductive or capacitive equipment, such as motors, transformers, capacitor banks, storage units or high current loads are installed.

Having discussed these recommendations fully, undertaken a robust risk assessment with input from both the electrical designer and client, and considered all the relevant implications, **this is a formal record that the inclusion of surge protection devices (SPDs) on this installation has been declined by the client or the party authorised to act on their behalf.** The risk assessment and relevant information should be attached. See also Appendix 2, note 11, in BS 7671:2018+A2:2022.

Premises:		Contractor/ Designer	
Address:		Address:	
Signature:		Client	Agent
Name (print):		Name (print):	
Date:		Date:	
Signature:		Electrician	Engineer
Name (print):		Name (print):	
Date:		Date:	

RISK ASSESSMENT FLOW CHART



Appendix 2 (informative) **STATUTORY REGULATIONS AND ASSOCIATED MEMORANDA** note 11 within BS 7671:2018+A2:2022

The Management of Health and Safety at Work Regulations 1999 require employers and self-employed persons to assess risks to workers and others who may be affected by their work or business. This is intended to enable them to identify measures they need to take to comply with the law. Guidance from the Health and Safety Executive INDG163 gives advice on these regulations. For the purposes of BS 7671, a risk assessment should involve an appropriate electrically skilled person.

Omission of protection against transient overvoltages by surge protective devices (SPDs): Tabulated risk assessment

Project:

Ensure reason for omission is recorded on as built drawings and the schedule of circuit details. Include this risk assessment with inspection and test documentation.

Circuit details	Reason for omission	Drawing reference as built	Distribution board details

RISK ASSESSMENT FOR THE OMISSION OF A SURGE PROTECTIVE DEVICE (SPD)



Omission of protection against transient overvoltages by surge protective devices (SPDs): Tabulated risk assessment

[illegible]



The Walled Garden
Bush Estate
Midlothian EH26 0SB
Tel: 0131 445 5577

www.select.org.uk